



TECHNICAL DATASHEET

TECH WASH IF

ONE STEP WATER MISCIBLE ROLLER AND BLANKET WASH

DESCRIPTION:

TECH WASH is a highly effective wash that will quickly remove ink and varnish. Because it is water miscible, TECH WASH will also remove gum, glaze, paper, lint and other water soluble compounds. TECH WASH is also an excellent choice for automatic blanket wash systems.

DIRECTIONS FOR USE:

ROLLERS: Apply TECH WASH straight or diluted with water up to 30% across the top of the roller train. Allow the product to run down the roller train for a few minutes and engage the wash up blade. Reapply as necessary until the fluid runs clear into the wash up tray.

BLANKETS: Apply TECH WASH straight or premixed with up to 30% water with a saturated cloth on the blanket.

AUTOMATIC UNITS: Can be used in all units.

READ SDS BEFORE USE.

FEATURES & BENEFITS:

- Water miscible up to 30%
- Excellent cleaning power.
- Very pleasant scent.
- Very Mild on Rollers

SPECIFICATIONS:

- Flashpoint: 108 degrees F (TCC)
- VOC: 6.78 lbs. per gallon 812 grams per liter, 99%
- Drying Speed: Moderate
- Solvent Strength: Moderate
- Odor: Mild
- Composite Vapor Pressure (mmHG): Less than 5.0

HMIS RATING:

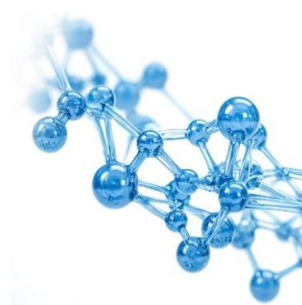
Health: 2 Flammability: 2 Reactivity: 0 Personal Protection: B

PACKAGING:

5 Gallon Pails

55 Gallon Drums

330 Gallon Totes



Tower Products is a global manufacturer of pressroom chemistry. Our products are formulated to help increase worker safety and environmental compliance while at the same time providing the printer with the best possible solutions for their printing environment.

Our products include:

- Flexographic plate cleaners
- Anilox Roller Cleaners
- Ultrasonic and Hot Tank Cleaners
- Specialty Pressroom Products