



TECHNICAL DATASHEET

CONTINUUM L3000

LED Satin General Purpose Coating

DESCRIPTION:

Tower's **CONTINUUM L3000** is a Satin (semi-matte) LED-cured coating suitable for conventional inks in roller, blanket, web, flexo, and in-line and perfect for lowenergy curing with high reactive lamp sys. Benzophenone, 4-MBP.

TEST BEFORE USING!

DIRECTIONS FOR USE:

Mix well before use.

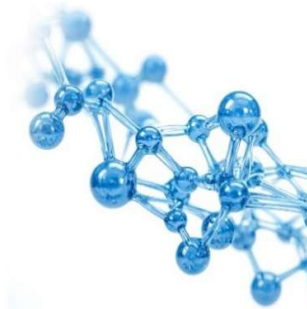
READ SDS BEFORE USE.

FEATURES & BENEFITS:

- Fast Cure
- No Ozone
- Excellent Rub Resistance
- Excellent Adhesion
- Paper, Board & Film Applications
- Plastics

SPECIFICATIONS:

• Flash Point (° F TCC):	>200 °F
• Specific Gravity:	1.09
• Gloss (60° over Leneta):	30-55
• Cure Speed FPM with 300 W/in^2 source:	100-300
• Rub Resistance:	>200
• Slip (face to face):	20-27 degrees
• Specific Gravity	1.08
• Color:	Clear
• Gluing, Stamping:	Test First due to variety of glues and foils
• Viscosity:	120-150 CPS @ 60 RPM and 77°F/23°C
• VOC (Method 24) lbs. / gal.:	0



Tower Products is a global manufacturer of pressroom chemistry. Our products are formulated to help increase worker safety and environmental compliance while at the same time providing the printer with the best possible solutions for their printing environment.

Our products include:

- Offset Pressroom Chemistry
- Flexographic Cleaners & Coatings
- Digital Cleaners & Coatings
- Screen Cleaners
- Specialty Pressroom Products

HMIS RATING:

Health: 1

Flammability: 1

Reactivity: 0

Personal Protection: B

PACKAGING:

5 Gallon Pail - Product Number: 61133TP-005

55 Gallon Drum - Product Number: 61133TP-055