



TECHNICAL DATASHEET

CONTINUUM L7000

LED Gloss General Purpose Coating

DESCRIPTION:

Tower's **CONTINUUM L7000** is a High gloss LED-cured coating for use with conventional inks. Formulated for higher-speed LED curing, works in both LED and UV in curing over heatset, UV hybrid, and HP indigo inks using blanket, roller, or anilox coating.

TEST BEFORE USING!

DIRECTIONS FOR USE:

Mix well before use.

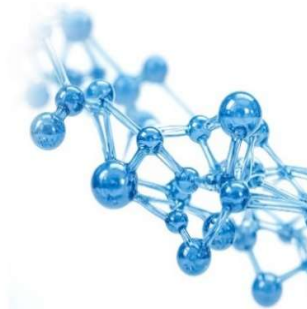
READ SDS BEFORE USE.

FEATURES & BENEFITS:

- High Gloss
- Low to No Yellowing
- Excellent Chemical and Water Resistance
- Higher Speed LED Curing
- Paper, Board & Film Applications
- Excellent Adhesion

SPECIFICATIONS:

• Flash Point (° F TCC):	>200 °F
• Specific Gravity:	1.09
• Gloss (60° over Leneta):	90+
• Cure Speed FPM with 300 W/in ² source:	100-300
• Rub Resistance:	>200
• Slip (face to face):	19-26 degrees
• Specific Gravity	1.08
• Color:	Colorless/Clear
• Gluing, Stamping:	Test First due to variety of glues and foils
• Viscosity:	170-220 CPS @ 60 RPM and 77°F/23°C
• VOC (Method 24) lbs. / gal.:	<0.01



Tower Products is a global manufacturer of pressroom chemistry. Our products are formulated to help increase worker safety and environmental compliance while at the same time providing the printer with the best possible solutions for their printing environment.

Our products include:

- Offset Pressroom Chemistry
- Flexographic Cleaners & Coatings
- Digital Cleaners & Coatings
- Screen Cleaners
- Specialty Pressroom Products

HMIS RATING:

Health: 2

Flammability: 0

Reactivity: 0

Personal Protection: B

PACKAGING:

5 Gallon Pail - Product Number: 61132TP-005

55 Gallon Drum - Product Number: 61132TP-055